

**CIF (SS) "AAAA"
FOOTBALL CHAMPIONSHIP**

**SOUVENIR
PROGRAM**

25c



**ANAHEIM
COLONISTS
VS.
SANTA ANA
SAINTS**

**ANAHEIM'S BIG-A STADIUM
FRIDAY, DEC. 15, 1967**

"FIRST IN REAL MEXICAN FOOD"

La Palma Restaurant

ANAHEIM, CALIFORNIA

940 North Anaheim Boulevard

Telephone 535-5323

CONE BROS.



- CHEVROLET
- CHEVY II
- CAMARO
- CHEVELLE
- CORVAIR
- CORVETTE

PH. 535-1143

215 N. ANAHEIM BLVD. — ANAHEIM

Arsene

— PHOTOGRAPHER —

1028 W. Lincoln Ave.

KE 5-5644

Hear Orange County Football Scores
On KWIZ-1480 After The Game . . .

Cottlers

FOR MEN

DOWNTOWN ANAHEIM

118 W. Lincoln

AND ROSSMOOR CENTER — LOS ALAMITOS

GOOD LUCK COLONISTS!



"MORE FOR YOUR BUILDING DOLLAR"

411 S. Manchester

Corner Manchester and Santa Ana Streets
535-2118 Anaheim

Shopping Center

Shopping Hours

Monday through Friday
12:00 - 9:00 P.M.

Sat. 10 - 5:30
Sun. Noon — 5:30

PRospect 4-3557



911 N. Brookhurst — Anaheim

ICE SKATING

Glacier Falls

ICE RINK & RESTAURANT

MON. Thru FRI. 10 a.m. to 10:30 p.m.
SAT. and SUN. 9:15 a.m. to 10:30 p.m.

MOONLIGHT SESSIONS
FRI. and SAT.: 11 p.m. to 1:00 a.m.
ADMISSION \$1.35 SKATES FREE



211 W. KATELLA ANAHEIM

PR 2-6510

MISSION FURNITURE CO.

FEATURING QUALITY BRANDS

Drexel-Henredon-Heritage

INTERIOR DECORATORS

Member of AID & NSID

223 E. Lincoln

774-5383

**CALIFORNIA INTERSCHOLASTIC FEDERATION
SOUTHERN SECTION OFFICERS**

President of the Council—Rev. Alexander Manville,
Principal, Bishop Garcia Diego HS.
Treasurer—Keith J. Lee, Principal, Dominguez HS.
Commissioner of Athletics—J. Kenneth Fagans

EXECUTIVE COMMITTEE

Richard Spaulding, Principal, Buena Park HS
Clair Franklin, Principal, Trona HS
Claud Hardesty, Principal, Santa Barbara HS
Rev. Thomas Kiefer, Principal, Bishop Amat HS
Steve Miletich, Vice Principal, Beverly Hills HS
(State CIF Representative)
Arthur Hobson, Assistant Superintendent, Whittier
HSD
Alex Alexander, Principal, Indio HS
Robert D. Ashton, Assistant Superintendent, Nor-
walk-La Mirada USD (State CIF Representative)
Keith Gunn, Principal, Victor Valley HS
James A. Faul, Principal, Workman HS

WHAT IS THE CIF, SS?

The California Interscholastic Federation, Southern Section, is a non-profit corporation organized to direct and control athletics in secondary schools located within the section. The Southern Section is one of ten such sections in the State. Each section is operated independently but all within the framework of the State Federation.

WHAT ARE THE PURPOSES OF THE CIF, SS?

- The purposes of the organization are:
1. To direct and control interscholastic athletics with the intent that they be regarded as educational resources;
 2. To fix the responsibility for administration of the interscholastic program;
 3. To regulate the administration through constitution, by-laws and efficient organization; and
 4. To cultivate cordial relations among schools through observance of standards of good sportsmanship.

HOW IS THE CIF, SS, GOVERNED?

The chief legislative body of the CIF, SS, is the Council which is comprised of one representative from each of the 45 leagues in the section. Each school has a voice in determining policy for the CIF, SS, as matters which are brought to the Council for considerations are initiated on the league level.

The Executive Committee, a smaller group

composed of eight elected members of the Council, interprets decisions made by the Council. The Executive Committee meets a minimum of six times during the school year.

Day-to-day administration of the CIF, SS, is the responsibility of the Commissioner of Athletics, J. Kenneth Fagans. The Commissioner acts as secretary of the Council and serves on all committees. His duties include managing championship play-offs in 12 approved sports as well as issuing the directives and bulletins sent from the CIF, SS, to its member schools.

IS MEMBERSHIP RESTRICTED?

Membership is open to public, parochial and private schools located within the following nine counties: Inyo, Imperial, Los Angeles, Orange, Riverside, San Bernardino, San Luis Obispo, Santa Barbara and Ventura.

The only exception to the above are public high schools under the jurisdiction of the Los Angeles Unified School District. These schools are members of the Los Angeles City Section of the CIF.

HOW MANY SCHOOLS BELONG TO THE CIF SS?

Currently 328 high schools in nine Southern California counties are regular members of the Southern Section. Associate memberships have been granted to 12 out-of-state high schools located in Arizona and Nevada for purposes of scheduling games with border-area California schools. Eighty Southland junior high schools are also associate members.

**HOW LONG HAS THE SOUTHERN SECTION
BEEN FUNCTIONING?**

High school athletics have been engaged in since before the turn of the century, but it wasn't until 1913 when the high schools in Southern California joined together to conduct a championship track meet that the Southern Section was born.

SANTA ANA-ANAHEIM GAME HISTORY

1920--Santa Ana 36, Anaheim 0	1953--Anaheim 19, Santa Ana 6
1921--Santa Ana 55, Anaheim 0	1954--Anaheim 40, Santa Ana 13
1922--Santa Ana 19, Anaheim 0	1955--Anaheim 32, Santa Ana 7
1923-1939--NO GAMES	1956--Anaheim 41, Santa Ana 14
1939--Santa Ana 0, Anaheim 0	1957--Anaheim 17, Santa Ana 0
1940-1942--NO GAMES	1958--Anaheim 14, Santa Ana 6
1943--Anaheim 7, Santa Ana 0	1959--Anaheim 14, Santa Ana 6
1944--Santa Ana 20, Anaheim 6	1960--Santa Ana 32, Anaheim 25
1945--Santa Ana 19, Anaheim 7	1961--Anaheim 6, Santa Ana 4
1946--Anaheim 7, Santa Ana 6	1962--Anaheim 7, Santa Ana 6
1947--Santa Ana 34, Anaheim 0	1963--Anaheim 34, Santa Ana 6
1948--Santa Ana 37, Anaheim 6	1964--Anaheim 14, Santa Ana 7
1949--Santa Ana 25, Anaheim 6	1965--Anaheim 20, Santa Ana 7
1950--Anaheim 36, Santa Ana 0	1966--Anaheim 14, Santa Ana 0
1951--Anaheim 26, Santa Ana 0	1967--Santa Ana 28, Anaheim 0
1952--Anaheim 20, Santa Ana 13	

Series Record—Santa Ana-10, Anaheim-19; 1 tie.



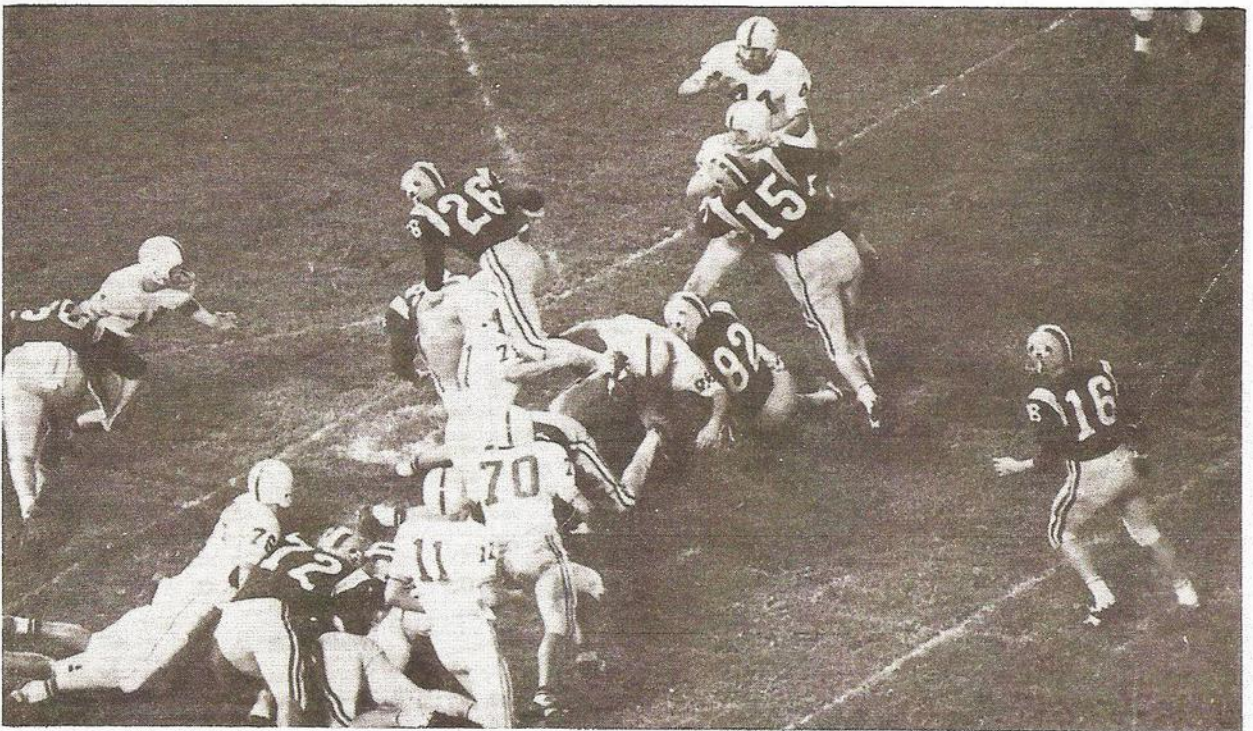
CLARE VAN HOOREBEKE, Anaheim Head Coach

Popular "Van" has recorded an incredible 147-34-10 mark during his 18 campaigns at the Colonist helm. The Men of Clare Van Hoorebeke have won 13 Sunset League titles during that time and one CIF co-championship. Anaheim has appeared in 14 CIF playoffs during the Dutch Master's 18-year reign.



CHESTER R. SHIRK, Anaheim High Principal

Since coming to Anaheim in 1938 as a baseball and golf coach, Mr. Shirk has piloted Colonist teams in B and C football, baseball, and basketball to Sunset League Championships. Shirk is a graduate of La Verne College and did graduate work at both Stanford University and Claremont graduate school.



ANOTHER SIX FOR THE COLONY GROUND MACHINE—With terrific blocking up front from Dave Maas (15), Bob Clayton (82), Rod Schorr (72), Gary Brown (50), Tom Fitzpatrick (34), and Wayne Bugbee (63), Anaheim I-back Eric Janes bowls his way to paydirt in Anaheim's 28-14 victory over El Rancho in CIF quarter-final action at the Big-A. (Anaheim High Photo Dept.)

Saints Going for Perfect Season in Tonight's Grid Clash

The Southland's most coveted prep grid prize is up for grabs as the greatest rivalry in Southern California gridiron history is renewed under the lights of Anaheim Stadium tonight.

It's the 31st meeting of Anaheim and Santa Ana with the CIF championship going to the victor, and if past records mean anything, it should be a no-holds-barred clash right down to the final gun.

It will be Anaheim's third appearance in the Big-A and Santa Ana's second. Neither squad has ever lost in the "Home of the Angels" with the Colonists recording playoff victories of 12-7 over Mater Dei last year and 28-14 over El Rancho in this year's quarter-final fray, while the Saints knocked off Servite, 28-21, last week in semi-final action.

In their 30 previous meetings, the Colonists have won 19 while losing 10 and tying one and have dropped only a pair of decisions to the Saints during the last 18 years with coach Clare Van Hoorebeke at the helm.

But the Santa Ana eleven enters tonight's showdown as the CIF's top-ranked team after rolling through nine straight foes during the regular season

and dumping Bishop Amat, 7-6, Pacific, 29-7, and Servite in playoff action.

One of the Saints regular season victims was the Colony eleven, which suffered a 28-0 licking at the hands of Santa Ana in the fourth game of the year. That loss knocked Anaheim from the Sunset League title, the ranks of the unbeaten, and the top spot in the CIF ratings, setting the stage for tonight's grudge match for all the CIF marbles.

The Sunset League champion Saints enter tonight's championship fray with probably the most balanced team in Southern California. The Saints boast nine all-Sunset League players including this year's back and lineman of the year in Marv Whitaker and John Conover.

Tom Baldwin, Sunset League coach of the year, sends an offense into tonight's game that ran over almost all opposing defenses this fall. Led by all-league ball hawks Isaac Curtis, Jack Meier, Rick Deckert, and Whitaker, the Saints are capable of six points from anywhere on the gridiron.

Deckert is an able quarterback who can run and throw with equal skill, while the Saints' outside running threat

belongs to the Whitaker-Curtis duo. Fullback Meier, listed as a doubtful starter, provides Santa Ana with awesome short yardage power.

With lineman of the year Conover at tight end for Santa Ana, the Sunset League are gruesome on the power sweep and deadly on the pass.

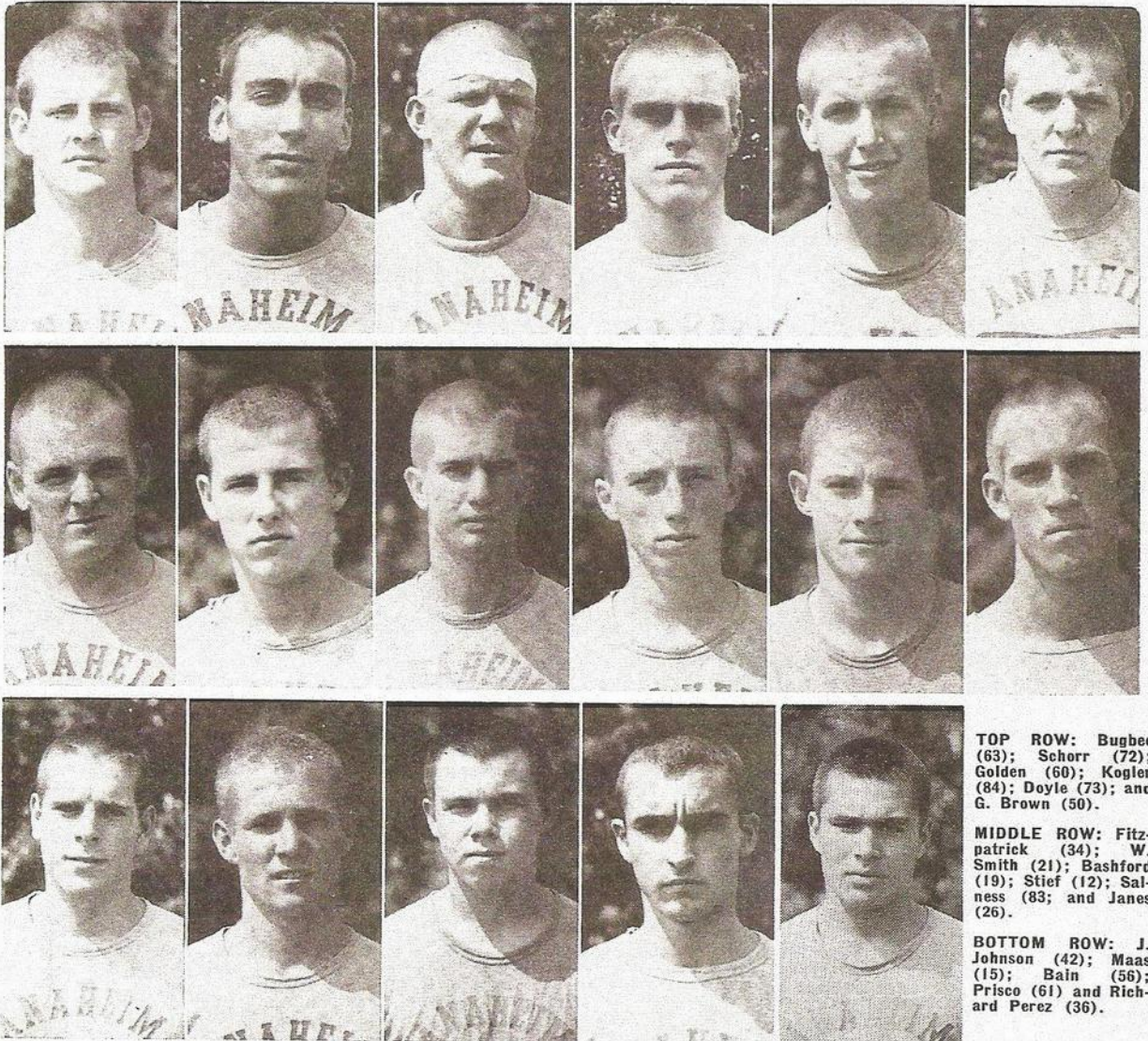
Defensively, Whitaker, Deckert, and Conover are joined by tackle Brooks Smith and linebacker Gary Sannes to form an almost impregnable wall against opposing offenses.

Anaheim enters the game with seven all-league stars, including guard Wayne Bugbee and fullback Tom Fitzpatrick who "make the Colony ground machine go."

With sophomore quarterback George Fraser finally securing the starting berth and halfback Walt Smith making a successful transition from defense to offense, Anaheim has suddenly become one of the most powerful offensive aggregations in the Southland.

The all-league crew of end Richard Perez, tackle Rod Schorr, guard Larry Golden, linebacker Jim Johnson, and halfback Dave Maas provide the nucleus for a more than adequate defensive unit that should give Santa Ana its stiffest test of the '67 campaign.

SEVENTEEN SENIORS IN PREP GRID FINAL

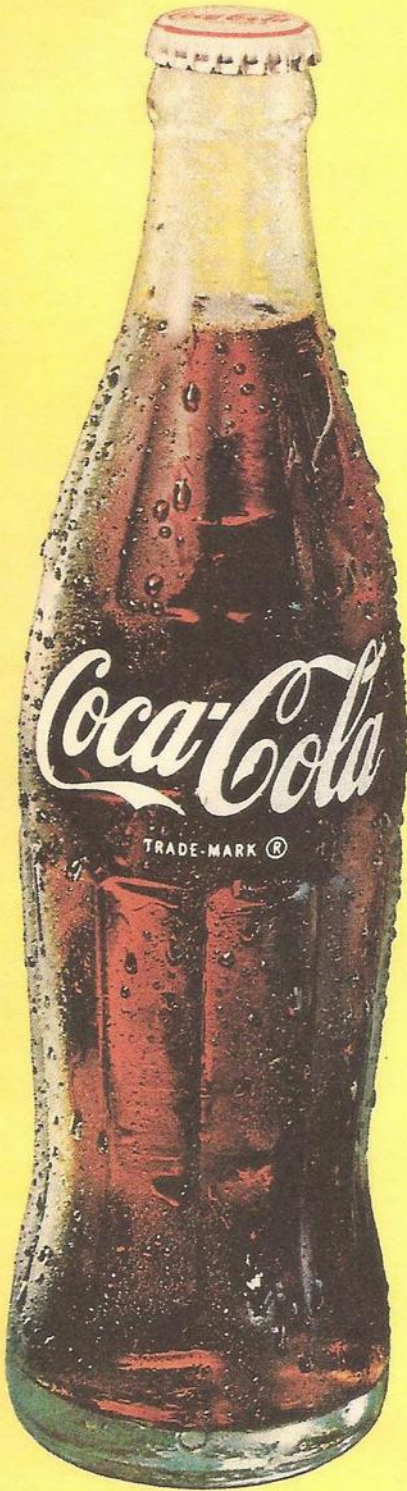


TOP ROW: Bugbee (63); Scherr (72); Golden (60); Kogler (84); Doyle (73); and G. Brown (50).

MIDDLE ROW: Fitzpatrick (34); W. Smith (21); Bashford (19); Stief (12); Sannes (83); and Janes (26).

BOTTOM ROW: J. Johnson (42); Maas (15); Bain (56); Prisco (61) and Richard Perez (36).

For the taste you never get tired of.



PROBABLE START

ANAHEIM "Colonists"

OFFENSE

82	—	BOB CLAYTON	TE
73	—	BOB DOYLE	LT
63	—	WAYNE BUGBEE	LG
50	—	GARRY BROWN	C
61	—	HANK PRISCO	RG
72	—	ROD SCHORR	RT
85	—	DAN SIMPSON	SE
16	—	GEORGE FRASER	QB
34	—	TOM FITZPATRICK	FB
21	—	WALT SMITH	IB
15	—	DAVID MAAS	WB

DEFENSE

72	—	ROD SCHORR	LT
60	—	LARRY GOLDEN	LG
63	—	WAYNE BUGBEE	RG
75	—	MARC KEMP	RT
36	—	RICHARD PEREZ	LC
42	—	JIM JOHNSON	LLB
51	—	PAT MAHONEY	RLB
83	—	KYM SALNESS	RC
21	—	WALT SMITH	LH
15	—	DAVID MAAS	RH
85	—	DAN SIMPSON	SAFETY

COACHING STAFF—C. A. VanHoorebeke, Brant Cowser, Bob Salerno, Marty Hicks, Bill Miller, Wayne Atkins; Trainer—Gene Donnelly

GAME OFFICIALS FOR 1967 C

REFEREE--BURT DAVIS

UMPIRE--CAL HOUSTON

HEAD LINESMAN--BILL BRADFORD

DRINK
Coca-Cola

RTING LINEUPS

SANTA ANA "Saints"

OFFENSE

88	—	LARRY BRUMSEY	SE
74	—	CHARLES PROCTOR	LT
62	—	BYRON RYONO	LG
50	—	TIM BYRON	C
65	—	JIM BLOWER	RG
00	—	JACK GILSON	RT
89	—	JOHN CONOVER	TE
14	—	RICK DECKERT	QB
32	—	JACK MEIER	FB
44	—	ISAAC CURTIS	TB
11	—	MARV WHITAKER	WB

DEFENSE

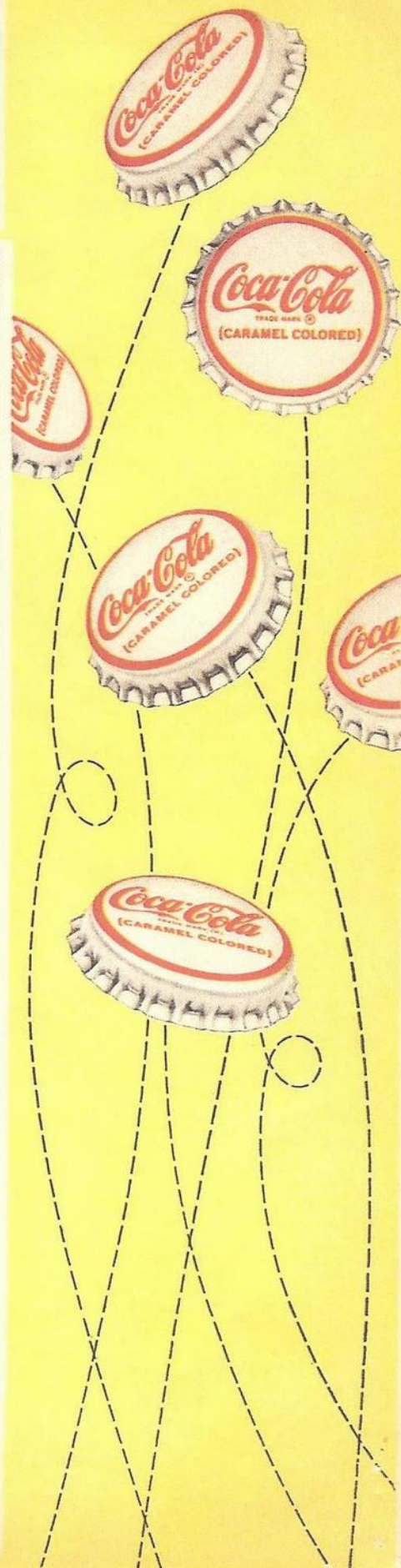
89	—	JOHN CONOVER	LE
72	—	PAT McCAFFREE	LT
50	—	TIM BYRON	MG
73	—	BROOKS SMITH	RT
31	—	FRANK MORAGA	RE
62	—	BRYON RYONO	LLB
66	—	GARY SANNES	RLB
22	—	STEVE HILL	ROVER
14	—	RICK DECKERT	LH
20	—	ANDY SOLIS	RH
11	—	MARV WHITAKER	S

COACHING STAFF—Tom Baldwin, Jack Pickering, Manuel Penaflo, Ben Haley.

"AAAA" CHAMPIONSHIP FINAL

FIELD JUDGE--FRED LLOYD

BACKFIELD JUDGE--GEORGE PETERSON



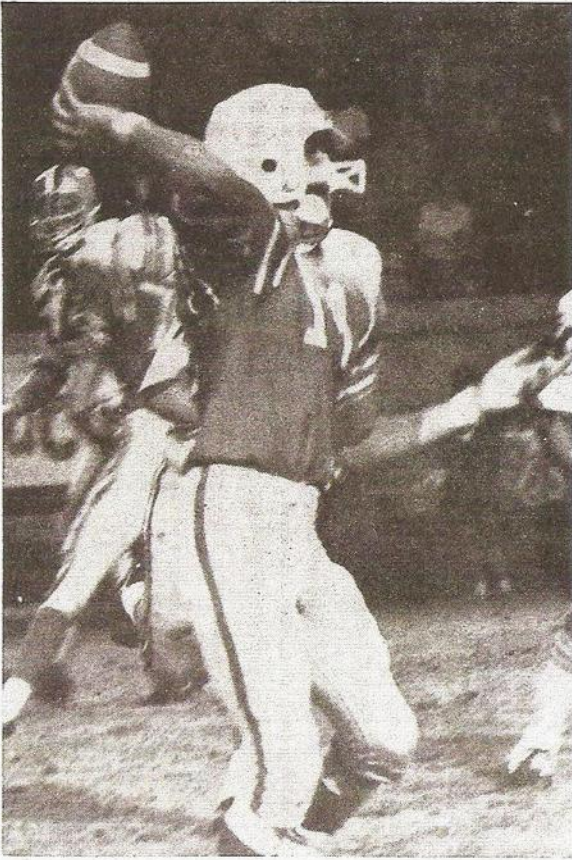


Saints Going for Perfect Season in Tonight's Clash

Santa Ana High School's football season of 1967, has been one of success, hard work, and a lot of time.

Tom Baldwin, head coach, has guided the Saints to a perfect 12-0 record. They have beaten such powerhouses as Mater Dei, Westminster, Bishop Amat, Servite, and Anaheim High Schools. The Saints placed six members on the All-County football team. They were Isaac Curtis, Jack Meier, John Conover, Brooks Smith, and Gary Sannes, and Marv Whitaker, All-County Back of the Year.

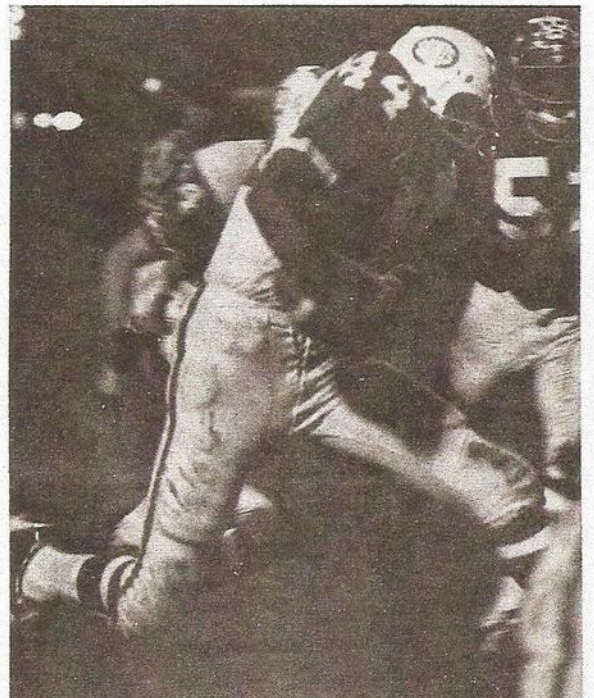
Although injuries have not plagued the Saints too much this season, there was some speculation as to whether fullback Jack Meier would be able to play. Gilbert Anaya, halfback, had a hip-pointer, but was expected to be back. The Saints should be at full-strength tonight for the all-important encounter, in which the winner takes the whole ball of wax.



Rick Deckert (14) passes in Sunset League opener to beat Western 21-7.



Pulling in a pass in the CIF game with Pacific (S.B.) is John Conover (89).



All County Back of the Year, Isaac Curtis (44) scampers for yardage in 29-7 win over Pacific (S.B.).

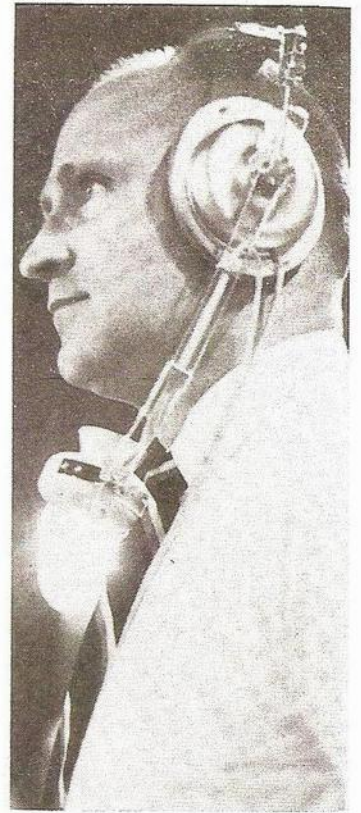


CHARLES COLWELL, Principal
Santa Ana High School

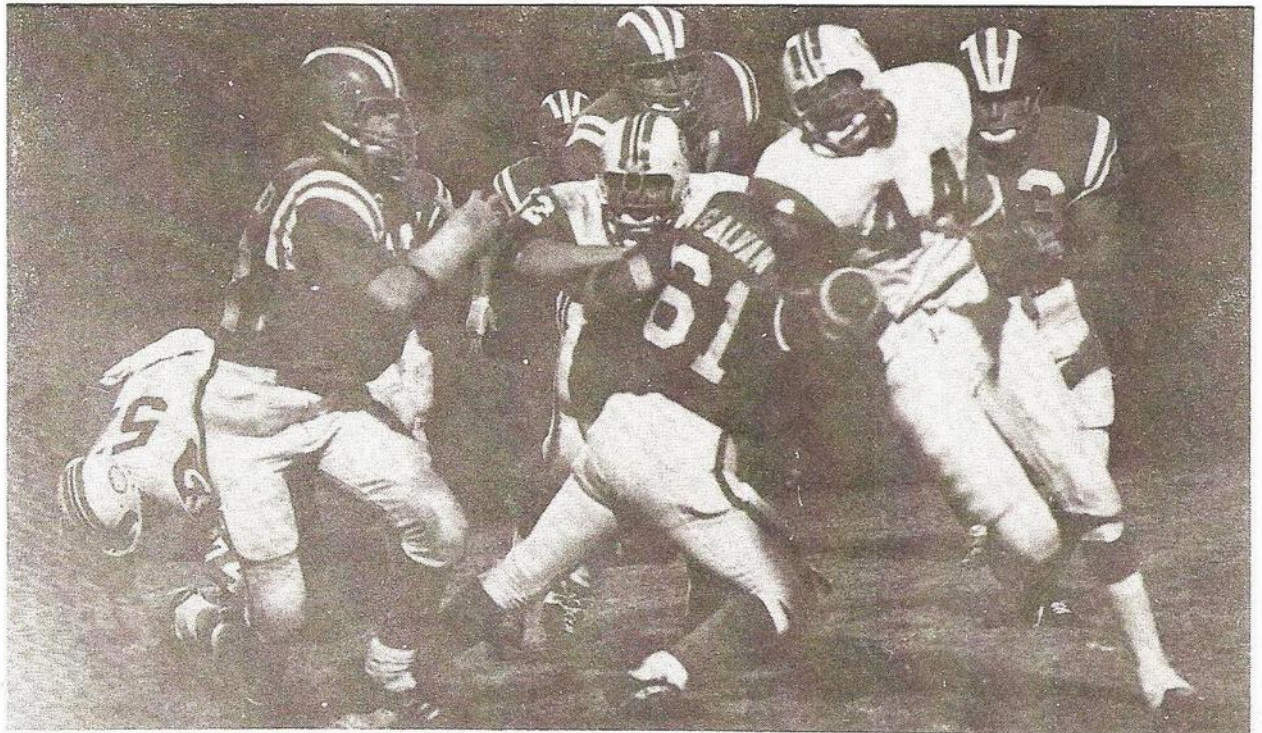
Charles Colwell has been part of the Santa Ana Unified School District administration since 1955. He took over the reins at the home of the Saints two years ago. Previously he was principal at Smedley Jr High.



Tom Baldwin has been head coach at Santa Ana High for three years. He worked several years as assistant to Dick Hill at Valley High before taking over the duties as head mentor of the Saints.



TOM BALDWIN
Head Coach



Isaac Curtis (44) turns on speed to evade Mater Dei defenders with help from Ken Wahlberg (52) and Bryon Ryono (62). Saints went on to edge the Monarchs 7-6 in the pre-season contest.

T E A M R O S T E R S

ANAHEIM "COLONISTS"

SANTA ANA "SAINTS"

NO.	NAME	Wt.	Ht.	Gr.	Exp.	Pos.	NO.	NAME	Pos.	Yr.	Ht.	Wt.
12	Mark Stief	145	5' 8"	2	B	QB	10	Woodsmall, Gary	QB	11	5' 9"	155
14	Jimmy Diaz	140	5' 7"	12	V	G	11	Whitaker, Marv	HB	12	5' 10"	180
15	David Maas	150	5' 10"	12	JV	B	12	Mott, Don	QB	12	5' 10"	180
16	George Fraser	168	6'	10	Jr. Hi	QB	14	Deckert, Rick	QB	12	5' 11"	175
17	Bob Joyce	145	5' 9"	11	B	B	20	Solis, Andy	HB	12	5' 10"	155
19	Larry Bashford	187	6' 2"	12	V	QB	21	Daly, Mike	HB	12	5' 8"	150
20	Bob Crittenden	140	5' 6"	11	B	E	22	Hill, Steve	HB	12	5' 11"	170
21	Walt Smith	172	6'	12	V	B	23	DuBois, Tony	HB	11	5' 8"	165
22	Tim Thorn	152	6'	10	Jr. Hi.	B	24	Afualo, Penesi	HB	11	5' 9"	160
23	Steve Reyes	150	5' 5"	12	B	B	30	Mears, Chris	FB	11	5' 10"	170
26	Eric Janes	155	5' 11"	12	V	B	31	Moraga, Frank	FB	12	5' 10"	175
27	Larry Hensley	165	5' 7"	12	Trans	HB	32	Meier, Jack	FB	12	6' 1"	215
29	Clif Ramsey	157	5' 8"	12	B	K	33	Patton, Chris	FB	11	6' 1"	185
30	Maurice Rodriguez	152	5' 6"	10	Jr. Hi.	B	40	Martinez, David	HB	11	5' 7"	150
31	Dan Dinkler	170	6'	11	B	B	41	Murdock, David	HB	12	5' 9"	160
34	Tom Fitzpatrick	198	6'	12	2V	FB	42	Anaya, Gilbert	HB	12	5' 9"	160
36	Richard Perez	167	5' 11"	12	V	E	43	Swanson, Paul	HB	12	5' 10"	155
40	Malcolm Poemoceah	169	5' 9"	11	Transfer	G	44	Curtis, Isaac	HB	11	6' 1"	175
41	Neil Fortier	165	5' 10"	10	Jr. Hi.	G	50	Byron, Tim	C	12	5' 10"	182
42	Jim Johnson	173	5' 9"	12	V	FB	51	Pierson, Jim	C	11	5' 10"	170
43	Steve Schulz	180	6' 0"	10	JH	E	52	Wahlberg, Ken	C	12	5' 11"	185
44	Frank Daniele	170	5' 11"	10	JH	E	53	Jiles, Jeff	C	10	5' 9"	145
49	Bill Breiholz	167	5' 7"	12	B	G	54	Koral, Rod	T	12	6' 1"	195
50	Garry Brown	198	5' 11"	12	V	C	60	Dischner, Bob	G	11	5' 11"	170
51	Pat Mahoney	192	5' 8"	11	V (65)	C	61	Lozano, Eflen	G	12	5'	170
56	Richard Bain	196	6' 2"	12	JV	C	62	Ryono, Byron	G	12	5' 6"	170
57	Darrell Fiene	177	5' 11"	11	B	C	63	Michel, Bob	G	11	5' 11"	182
60	Larry Golden	181	6'	12	V	G	64	Rios, David	G	11	5' 9"	170
61	Hank Prisco	160	5' 10"	12	JV	G	65	Blower, Jim	G	12	5' 9"	180
62	Marty Davis	186	5' 8"	11	B	G	66	Sannes, Gary	G	12	5' 9"	185
63	Wayne Bugbee	195	5' 10"	12	2V	G	67	Montana, Ruben	G	12	5' 9"	170
64	Ken Neidiger	172	5' 6"	12	B	G	70	Duncan, Chris	T	11	6'	190
65	Jim Rice	198	5' 11"	11	JV	G	71	Hartman, Mark	T	10	6' 1"	200
70	Jack Murry	204	5' 10"	12	Transfer	T	72	McCaffree, Pat	T	11	6' 1"	190
71	Tim Short	188	5' 9"	11	JV	T	73	Smith, Brooks	T	12	6'	190
72	Rod Schorr	198	6' 2"	12	V	T	74	Proctor, Charles	T	12	6' 4"	210
73	Bob Doyle	202	6' 3"	12	JV	T	75	Blackwell, Bill	T	12	6' 3"	215
74	Richard Reinhardt	207	5' 11"	11	JV	T	76	Vaca, Mike	T	12	5' 11"	197
75	Marc Kemp	192	5' 11"	11	JV	T	77	Felix, Renaldo	T	11	6' 1"	200
80	Carl Rahn	196	6'	11	JV	E	80	Johnson, Dan	E	12	6' 2"	185
81	Gary Tozer	155	6' 1"	10	Jr. Hi.	E	81	Howard, Randy	E	11	6'	170
82	Bob Clayton	197	6' 3"	11	JV	E	82	Jensen, Gary	E	11	6'	170
83	Kym Salness	180	6' 2"	12	V	E	83	Brockett, Bill	E	11	5' 10"	165
84	Bob Kogler	200	6' 4"	12	V	E	84	Lloyd, Mike	K	12	6'	180
85	Dan Simpson	185	6' 4"	11	V	E	85	Moore, Tim	E	12	5' 10"	160
							86	Leonard, Terry	E	12	6'	175
							87	Montano, Al	T	11	5' 7"	170
							88	Brumsey, Larry	E	11	6' 4"	190
							89	Conover, John	E	12	6' 4"	205
							00	Gilson, Jack	T	12	5' 11"	215

COLONIST FOOTBALL FANS

Adult Fans Are Invited to View Every Week's Game on Film

Comments by Coach Van — Tuesdays During Season

FREE Coffee and Doughnuts — High School Cafeteria 8 P.M.

COLONIST BOOSTER CLUB

GO COLONISTS! GO!

GROVER ESCROW, Corporation

"THREE LOCATIONS TO SERVE YOU BETTER"

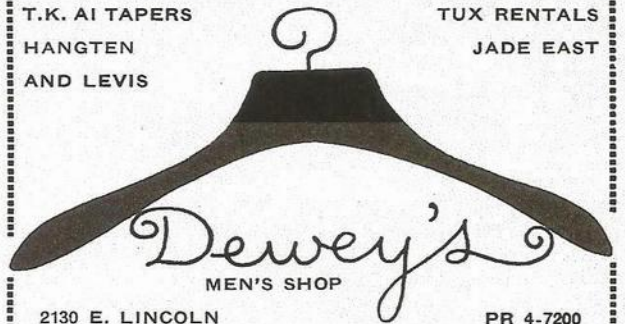
111 South Illinois—Phone 533-1311

1571 West Katella—Phone 772-5240

In Tustin—18410 Fourth St.—544-8215

T.K. AI TAPERS
HANGTEN
AND LEVIS

TUX RENTALS
JADE EAST



2130 E. LINCOLN

PR 4-7200

"EAST ANAHEIM SHOPPING CENTER"



**ANAHEIM TRUCK
& TRANSFER CO.**

505 SOUTH ANAHEIM, ANAHEIM
KE 5-2863

**DEPENDABLE Through the Years
SINCE 1872**

Our 95th Anniversary

Agent for Allied Van Lines, Inc.

J. CHANKIN'S

The Woodwind Shop

Instrument Making & Repairs

"Consistently Fine Work"

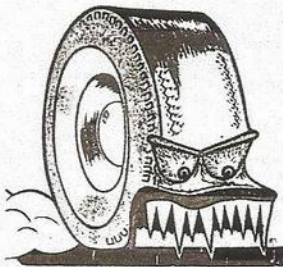
Custom Mouthpieces—Acoustical Laboratory
Specialty Work—Fully Equipped Shop—Refinishing
SALES—Musical Instruments — and —
Accessories — New • Used

535-8654

210 N. ANAHEIM BLVD., Downtown Anaheim

Maloney's

TIRE CO.
252 NO. ANAHEIM BLVD.
ANAHEIM



Phone 635-2890

PREMIUM RETREADING
COMPLETE BRAKE & FRONT END ALIGNMENT
CHEATER SLICKS — DUNLOP & PIRELLI

KNOW THE SCORE
ON ANAHEIM SPORTS
READ

The Bulletin

232 S. LEMON

PR 4-7870

BALLMAN'S SALES
DISCOUNT CENTER SERVICE
PR 4-3290



Color TV

APPLIANCES ● TELEVISION ● STEREO
Frigidaire General Electric Maytag

RCA Victor Motorola Zenith

122 W. Broadway

Opposite
Post Office

Anaheim



HARDIN OLDSMOBILE

YOUR LOCAL OLDS DEALER

1300 S. ANAHEIM BLVD.

635-2020

"The Best Deal Is A New Oldsmobile"



STEFFY BUICK

953 S. ANAHEIM BLVD.
PHONE 776-7360

"When Better Automobiles Are Built
Buick Will Build Them"

swanberger's

FOR MEN

145 W. LINCOLN AVE.

—Downtown Anaheim—

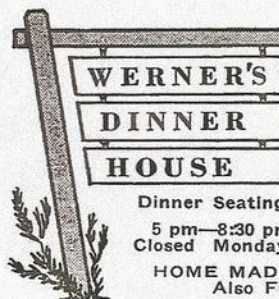
PR. 2-7317

"All of the Hits and Most of
the Misses"

BATON MUSIC CO.

157 W. Lincoln Ave. KE 5-3784

COMPLETE RECORD STOCK



Dinner Seating from (535-5505)
5 pm—8:30 pm Sunday 12—8 pm
Closed Monday — Open Holiday

HOME MADE PIES & CAKES
Also FOOD TO GO

1001 W. Lincoln, Anaheim
Next Door to Anaheim High School



A. H. SHIPKEY INC.

Complete Tire Service

- 8 HOUR RETREAD SERVICE
- WHEEL BALANCING
- WHEEL ALIGNMENT
- BRAKE SERVICE

420 W. Lincoln

KE 5-1167

Jackson Drug Co.

Telephone KE 5-2322

PRESCRIPTION SPECIALISTS

Earle T. Jackson, AHS—"21"

Donald F. Lee, AHS—"55"

OPEN 8 A.M. — 9 P.M.

237 E. Lincoln Ave. Free Delivery
Free Parking

McCOY DRUG CO.

PRESCRIPTION SPECIALISTS

Drugs — Sundries — Cosmetics

"The Drug Store With a Heart
in the Heart of Anaheim"

100 W. Lincoln

535-2273

Wisser Sporting Goods

The Sportsmen's Headquarters

Downtown Anaheim

169 W. Lincoln Ave.

KE 5-3417