

OFFICIAL PROGRAM

TEN CENTS



**R E D L A N D S**

**v s**

**A N A H E I M**

SEPTEMBER

21

1951

LA PALMA

PARK

STADIUM

ANAHEIM

# PAUL'S

SANDWICH & MALT SHOP

900 N. Los Angeles St.

MONARCH & DELUXE  
HAMBURGERS

Phone  
Ana. 9137

Closed  
Wednesdays

TRUSSES BELTS & ELASTIC HOSIERY  
FULL LINE OF ELASTIC SUPPORTERS

Earle T. Jackson, A.U.H.S. '21

## Jackson Drug Co.

PRESCRIPTION SPECIALISTS

237 E. Center St. Phone 2322 Anaheim, Calif

## MIDDLETON MOTOR SALES

*DeSoto Plymouth*

"TEX" MIDDLETON

Telephone 4763

420 W. Center St. Anaheim, Calif.

WE ARE PULLING FOR YOU

## THE SQR STORE

Leading Department Store

CENTER & LEMON STS.

## M and H MARKET

We Buy for Less — We Sell for Less

We Advertise Only Highest Quality  
Merchandise

Ample Free Parking in Rear

CYPRESS, CALIF. PHONE ANA. 60356

## SMITH - REAFSNYDER FURNITURE COMPANY

Free Decoration Service

151 North Los Angeles Street

PHONE 2409 ANAHEIM, CALIF.

## 5 Minute Auto Wash

GOODRICH TIRES and ACCESSORIES  
QUAKER STATE OIL

## K & L Super Service

558 S. LOS ANGELES ST.

PHONE 7550 ANAHEIM

GO! GO! COLONISTS!

## R. Joe Quast & Sons

PLUMBING — APPLIANCES

306 N. Los Angeles St. Phone 2506

## 16 Lettermen Return to AHS

With three weeks of practice under their belts (one less than last year), the Anaheim Colonist's '51 varsity football team takes the field tonight against one of last year's strongest CIF teams.

Coached by Clare VanHoorebeke, John Wallin and Bill Hicks, Anaheim is operating from the split T this year and hopes to capitalize on quick openers and around end slants.

Led by Capt. Gene Geselle, center, the line is a place where the Colonists look to receive their most strength, with 11 returning varsity lettermen and several of last year's Sunset league co-championship Bee linemen. The forward wall also weighs out slightly heavier than last year. Returning linemen include Glenn Kaminsky, Bill Miller, Joe Hoffman, Lyle Bass, Carl Hatfield, Ed Herrera, Gene Geselle, Fred Head, Jim Holve, Al Clayes, and Dan Berg ('49 letterman).

In the backfield five returning lettermen and several backs up from the Bees are on the roster. They include Ira Webber, John Steinborn, John Herrera, Lennie Kolb and Jim Roberts. Aaron Peralta and Ronnie Sanchez are former Bee backs. Frank Cancino and Eli Peralta are recent arrivals at AUHS.

Anaheim last year posted a five win, three loss record and averaged 21 points per game, while holding opponents to 12. They ended up in third place in the Sunset league behind Fullerton and Newport.

Anaheim Bee squad, coached by Sam Keith and Bill Hunstock boasts only six lettermen this year, Don Davis, Gayle Herbel,



### PRINCIPAL PAUL H. DEMAREE WELCOMES FOOTBALL FANS

Welcome, football fans, to La Palma Park and the Colonists' first game of the 1951-52 football season. We are sure that tonight you will see a good game between two worthy opponents, each striving to get off to a good start in the opening contest.

Football is truly an American game. It is symbolic of the vigorous lives we live and of the sportsmanship we admire. May the game tonight and those to follow be striking examples of the American love for fair competition and our respect for the rights of others.

PAUL H. DEMAREE  
Principal and Dis't Supt.

Dean Stokes, Tei Tanaka, Bill Walker and John Wright. Last year the squad tied for league championship with Santa Ana. Running off the same formations, the Bees are organized as part of an overall unified training program at Anaheim instituted by Coach VanHoorebeke.

## Redlands Has New Terriers

When Coach Ralph "Buck" Weaver takes his crop of Terriers out on LaPalma Park field tonight for the opening game of the 1951 football season he will enter an entirely new and untried team.

With practically the entire squad of Citrus belt league champs and CIF semi-finalists lost through graduation, he has had to start from scratch in forming the 1951 blue and white squad. Many of his new candidates are former members of the 1950 sophomore squad which tied with Pomona and Chaffey for the 1950 C.B.L. championship.

The Terriers have only six returning lettermen and of those, only two—Ralph Guercio (RG) and Tom Linane (LH) were starters last year. There are 40 candidates out for the squad this year.

Other teams on the Terrier program will be Leusinger of Inglewood and Wilson of Long Beach before going into C.B.L. games which include Riverside, Chaffey, San Bernardino, Pomona and Colton, in that order.

### ANAHEIM COLONISTS 1951 FOOTBALL SCHEDULE

Sept. 28 Anaheim at Chaffey.  
Oct. 5 Citrus at Anaheim.  
Oct. 12 Anaheim at Covina.  
Oct. 19 Anaheim at Santa Ana.  
Oct. 26 Anaheim at Huntington Beach.  
Nov. 2 Anaheim at Fullerton.  
Nov. 9 Newport at Anaheim.  
Nov. 16 Orange at Anaheim.

### ANAHEIM



No 'extras'! No 'frills'!

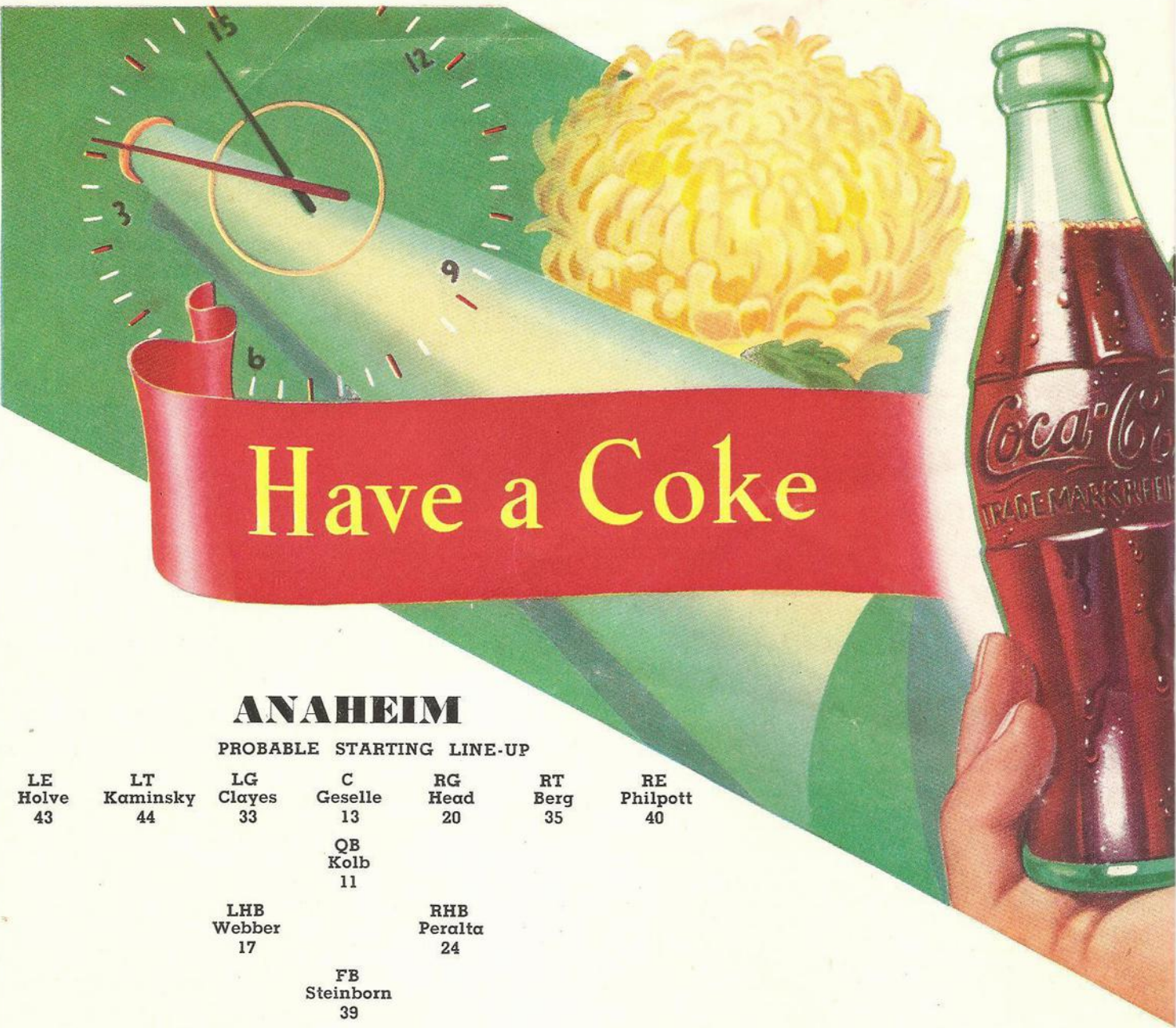
Just 100% value every day!

THE FRIENDLY STORE IN A FRIENDLY CITY

Free Parking in Rear of Store

124 W. CENTER ST.

ANAHEIM, CALIF.



# Have a Coke

## ANAHEIM

### PROBABLE STARTING LINE-UP

|                   |                      |                     |                       |                      |                  |                      |
|-------------------|----------------------|---------------------|-----------------------|----------------------|------------------|----------------------|
| LE<br>Holve<br>43 | LT<br>Kaminsky<br>44 | LG<br>Clayes<br>33  | C<br>Geselle<br>13    | RG<br>Head<br>20     | RT<br>Berg<br>35 | RE<br>Philpott<br>40 |
|                   |                      |                     | QB<br>Kolb<br>11      |                      |                  |                      |
|                   |                      | LHB<br>Webber<br>17 |                       | RHB<br>Peralta<br>24 |                  |                      |
|                   |                      |                     | FB<br>Steinborn<br>39 |                      |                  |                      |

### SQUAD LIST

|                   |                    |                 |
|-------------------|--------------------|-----------------|
| 11-Kolb qb        | 24-Peralta, E. rhb | 39-Steinborn fb |
| 12-Patin g        | 25-Starnes e       | 40-Philpott rh  |
| 13-Geselle c      | 26-Sanders g       | 43-Holve le     |
| 14-Peralta, A. hb | 27-Cancino qb      | 44-Kaminsky lt  |
| 15-Herrera, J. hb | 28-Winger e        | 45-Padilla t    |
| 16-Bokelman c     | 30-Azzara e        | 47-Hatfield e   |
| 17-Webber lhb     | 31-Roberts fb      | 49-DeGross t    |
| 18-Warner g       | 32-Bass e          | 50-Baker t      |
| 19-Hoffman c      | 33-Clayes lg       | 52-Boren t      |
| 20-Head rg        | 34-Gruenemay c     | 53-Herrera, E t |
| 21-Flynn e        | 35-Berg rt         | -Templeton hb   |
| 22-Miller rg      | 37-Rees, H. e      | -Thomas t       |
| 23-Sanchez hb     | 38-Rees, G. e      | -Bishop qb      |

| SCORE | 1 | 2 | 3 | 4 | TO |
|-------|---|---|---|---|----|
|       |   |   |   |   |    |
|       |   |   |   |   |    |

Referee—John McDonough  
 Headlinesman—Al Reboin  
 Umpire—Bill Ross

### REFEREE'S SIGNALS



Illegal Forward Pass



Penalty Refused, Incomplete Pass, Missed Goal, etc.



Defensive Holding



Illegal use of Hands or Arms



Roughing Kicker



Illegal Motion or Formation at Snap



Personal Foul





# REDLANDS

## PROBABLE STARTING LINE-UP

|                      |                      |                    |                    |                     |                     |                     |
|----------------------|----------------------|--------------------|--------------------|---------------------|---------------------|---------------------|
| LE<br>McCulley<br>17 | LT<br>Martinez<br>37 | LG<br>Bandy<br>40  | C<br>Stevens<br>22 | RG<br>Guercio<br>35 | RT<br>Quesada<br>43 | RE<br>Britten<br>41 |
|                      |                      |                    | QB<br>Winter<br>13 |                     |                     |                     |
|                      |                      | LH<br>Linane<br>33 |                    | RH<br>Bunn<br>11    |                     |                     |
|                      |                      |                    | FB<br>Goins<br>24  |                     |                     |                     |

## SQUAD LIST

|                |                  |                |
|----------------|------------------|----------------|
| 10-Jennings fb | 23-Ballni lg     | 36-Loveless lg |
| 11-Bunn rh     | 24-Goins fb      | 37-Martinez lt |
| 12-Butler re   | 25-Parks lg      | 38-Boring lh   |
| 13-Winter qb   | 26-Witter rg     | 39-Woodring rh |
| 14-Nuttleman e | 27-England       | 40-Bandy lg    |
| 15-Farmer lh   | 28-Thomas le     | 41-Britten re  |
| 16-Sanders lg  | 29-Loughlin re   | 42-Stroud c    |
| 17-McCulley le | 30-Strahl le     | 43-Quesada rt  |
| 18-Weaver qb   | 31-Price rg      | 44-Hurley rt   |
| 19-Kincaid rt  | 32-VanDyke qb    | 45-Stoll lg    |
| 20-Buck fb     | 33-Linane lh     | 47-Ford lt     |
| 22-Stevens c   | 34-Greenslade rg | 48-Stockham rt |
|                | 35-Guercio rg    |                |

DRINK

# Coca-Cola

TRADE-MARK ®

COPYRIGHT 1951 THE COCA-COLA COMPANY

TAL



OUT



Interference with Fair Catch or Forward Pass



Delay of Game or Excess Time Out

Off-side or Violation of Free-Kick Rules

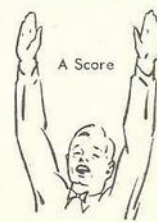


Clipping

Crawling, Pushing or Helping Runner



Safety



A Score

CONE BROTHERS AGENCY



CONE CHEVROLET

SALES — SERVICE

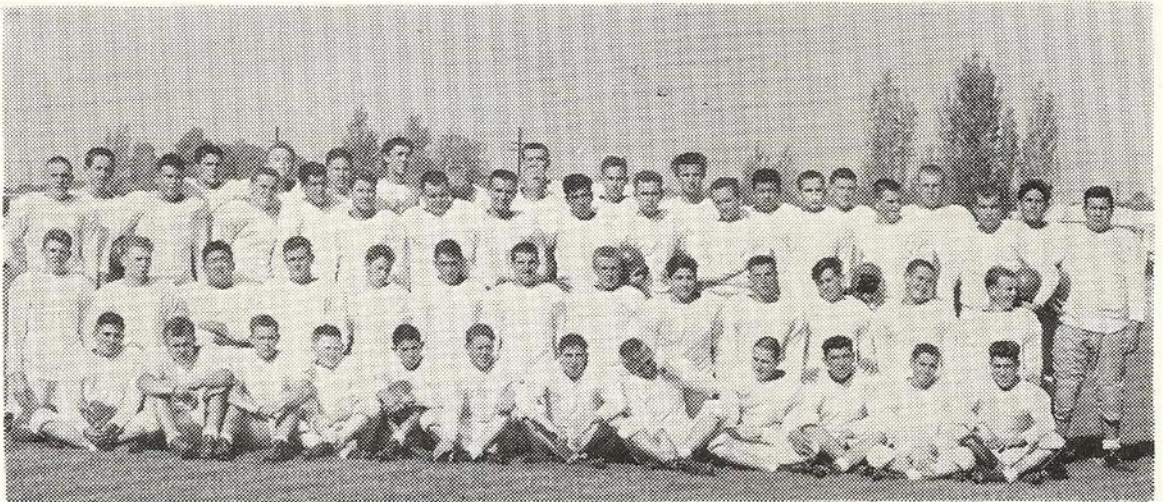
215 N. LOS ANGELES ST.      PHONE 2215

*Clarice Sportswear*

219 W. Center      Phone 2305

ANAHEIM, CALIFORNIA

## 1951 Colonist Varsity Football Team



TOP ROW—Youngkeit, Davis, Brown, H. Rees, Ewart, Holve, Gibson, G. Rees, Collins, A. Peralta, Boren, Cancino, Herrera. THIRD ROW — Taylor, Mang, Gruenemay, Templeton, Totton, DeGroff, Steinborn, Starnes, E. Peralta, Miller, Hahn, Hoffman, Kaminsky, Padilla. SECOND ROW—Stodghill, Head, Mitobe, Berg, Smith, Flynn, Philpott, Gedney, Wells, Ward, Azzara, Lyle Bass, Winger. FIRD ROW—Sanders, Roberts, Patin, Cuthbert, Kolb, Bokelman, Clayes, Geselle, Lee Bass, Sanchez, Webber, J. Herrera.

Wishing You a Successful Season

**Hadley's Bakery**

FOUNTAIN

101 West Center

Phone 2987

Sporting Goods • Athletic Equipment

**BOB WILLIAMS**

SPORTING GOODS

Phone 4806

131 W. Broadway • Anaheim, Calif.

# SWANBERGERS

PHONE 4170  
145 W. CENTER

*The Students Store*



CYPRESS HARDWARE

NOE & NOE

5461 Lincoln Ave. Phone Ana. 6927 Cypress

Phone 3417

**L. N. WISSER**

SPORTING GOODS

169 W. Center St. Anaheim, Calif.

LET'S GO COLONIST !!

"Anaheim's Volume Dealer"

*Robert H. Boney*

DODGE — PLYMOUTH

Fine Used Cars  
Good Service

328 W. Center Ph. 2113, 6533

*Glenn's Cafe*

CONSISTENTLY GOOD FOOD  
AT POPULAR PRICES

Elsie and Maynard Glenn

*C. D. Colfers*

**GOOD LUCK COLONISTS!**

*Fashion Favorites*

**158 West Center Street  
ANAHEIM, CALIF.**

# ARMSTRONGS

FOR A NITE SNACK  
AFTER THE GAME

OPEN  
10 A.M. — 1 A.M.

Watch for Opening of New Modern Shop Soon  
at 5 Points  
1201 LINCOLN AVE.



CHINA GLASS HOUSEWARE  
Phone 4648

239 W. Center St. Anaheim, Calif.

## Henry's

DRUG STORE  
Prescription Pharmacists

TO PLEASE YOU  
IS A PLEASURE TO US

5501 Lincoln Ave. Phone 6-0402 Cypress

## Martenet Hardware

HARDWARE PAINTS APPLIANCES

Fishing Tackle — Guns and Ammunition

Phone 2303 323 W. Center St.  
Anaheim, California

Business Phone 2759

## EHLERS

LAWNMOWERS — KEYS  
YOUR SCHWINN BICYCLES

Sales and Service 419 W. Center St.  
Repairing and Welding Anaheim, Calif.

SALES **BUICK** SERVICE

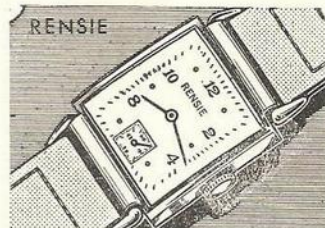
STEFFY BUICK COMPANY

410 S. Los Angeles St. Anaheim 2257



SINCE 1872

DEPENDABLE THROUGH THE YEARS



## F. C. Kendrick

Jeweler and Optometrist  
ANAHEIM, CALIF.

155 West Center

Phone 4403